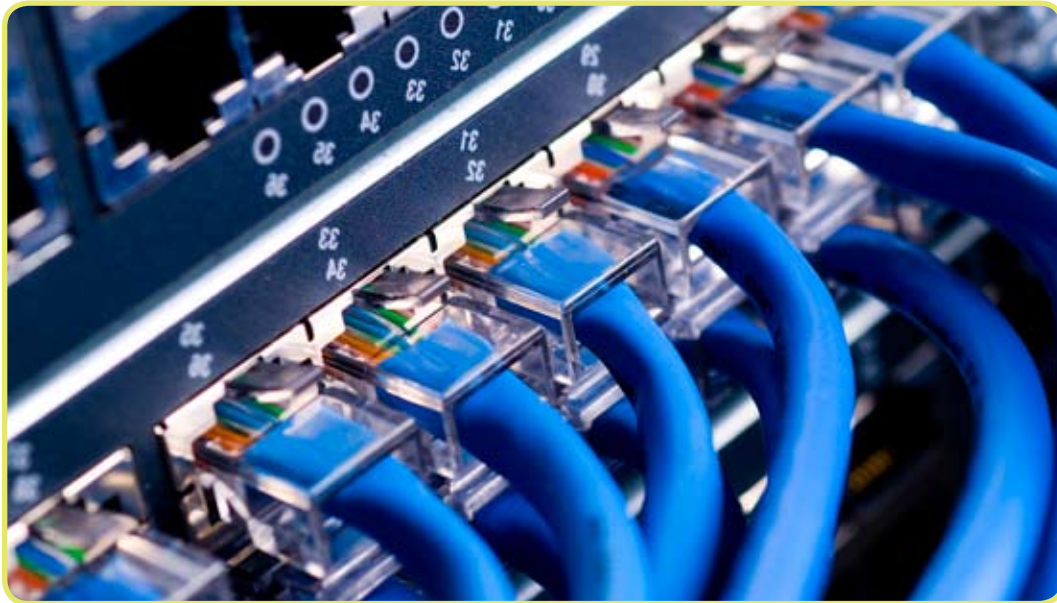


CASE STUDY 02

National Healthcare Supplier



CABLING DESIGN AND INSTALLATION FOR NATIONAL HEALTH CARE PRODUCT SUPPLIER

CIS PROVIDES INFRASTRUCTURE TO ACCOMMODATE GROWING
CALL CENTERS

IMPLEMENTS PROJECT WITHOUT INTERRUPTING CLIENT'S
ABILITY TO PERFORM WORK

OVERVIEW:

A national health care product supplier was embarking on an expansion of their distribution facility to accommodate their growing call centers. The company hoped to continue everyday operations while much of the project was underway.

CIS was approached to design and install cabling services to support the expansion.



SERVICES PROVIDED:

- Connecting five new IDF's with multi-mode fiber & 100-pair plenum copper cable
- Installation of over (500) Cat 5e cables to over (125) 4-port faceplates

OUTCOME:

CIS installed cabling to the planned occupied space to be customer ready. Lengths of cable were run to the unoccupied area to be ready to drop when customer was ready to expand.

CASE STUDY 02